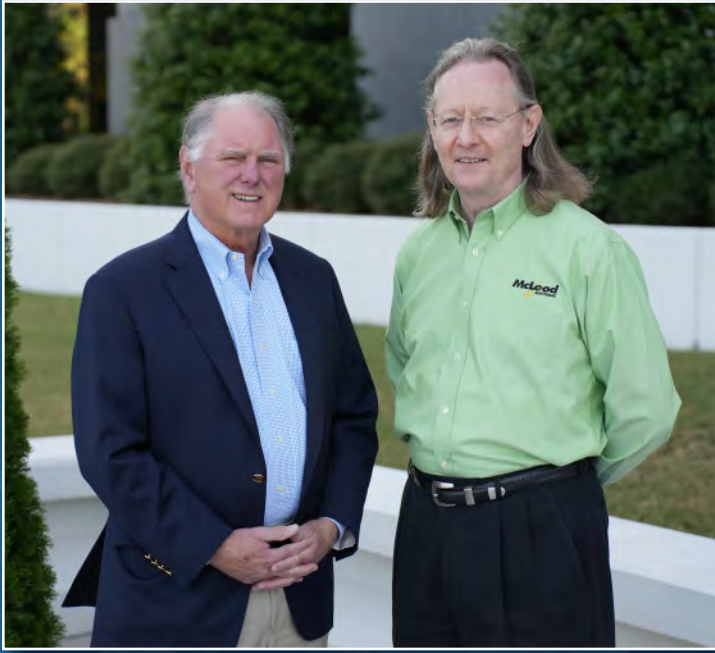




FORWARD
SHELBY COUNTY

Message from our Co-Chairs



Economic growth in Shelby County has been dramatic over the past several decades and has brought unprecedented opportunities to our communities.

And now, substantial change is upon us. The recent pandemic impacts continue to evolve rapidly and our workforce has many more employment options than ever before. Our Shelby County Chamber is eager to take the next steps in this “new normal” in both programming outreach and in its partnership with 58 INC in targeted economic development. ***Forward Shelby County*** – a three-year plan -- is designed to boost the number of jobs, career opportunities and the quality of life for all our citizens with a strong focus on making Shelby County an even better place where people want to live, work and prosper.

As business owners in Shelby County, we feel the timing couldn’t be better! The global pandemic reinforced the importance of working together to handle adversity, and even more important, to make good things happen regardless of the situation.

Through ***Forward Shelby County***, which is laid out in the following pages, the Chamber and its collaborative partner, 58 INC, will focus time, energy, talents and resources to leverage the momentum of the past, current programming and community-building accomplishments to achieve even greater results and outcomes by bringing this vision to fruition.

We have both invested in Shelby County, and believe in the process and product of this new three-year roadmap. We encourage your organization to join ours in embracing change, growing our existing businesses and expanding our business economy!

Tommy Brigham

Chairman of the Board &
Founding Partner
ARC Realty

Tom McLeod

Founder, President & CEO,
McLeod Software

Where We Started — What We Have Accomplished





BUSINESS ADVOCACY

2019 — Voiced public support of “Rebuild Alabama” to state legislative delegation during Special Session



BUSINESS ADVOCACY

2019 — Developed “Medical Expansion” language for submission to Shelby County legislative delegation



WORKFORCE

2019 — Coordinated six “Education Connections” programs with Shelby County Board of Education bringing seniors together with business and community leaders to discuss career readiness



BUSINESS GROWTH

2020 — Conducted **58** Business Contact Visits



WORKFORCE

2020 — Conducted “career readiness” programming for **3,095** 9th grade students and **2,290** 11th grade students



BUSINESS GROWTH

2020 — Business Support Center assisted 61 companies resulting in **140+ new jobs**



WORKFORCE

2020 — Expanded “High School Ready to Work” program with 30 participating students and 27 engaged compaies



BUSINESS GROWTH

2021 — Business Support Center assisted 121 companies resulting in **570+ new jobs**



BUSINESS GROWTH

2021 — Conducted **83** Business Contact Visits



WORKFORCE

2021 — Conducted “career readiness” programming for **3,289** 9th grade students and **2,290** 11th grade students

WORKFORCE

2019 — Provided direct and public support of Jefferson State Community College’s construction of a welding lab on its’ Shelby/Hoover campus



WORKFORCE

2019 — Launched “High School Ready to Work” elective course in four high schools with 64 participating students and 30+ engaged companies



BUSINESS GROWTH

2019 — Assisted seven company expansions creating **251 new jobs** and **\$24.6 million** capital investment



BUSINESS GROWTH

2020 — Assisted several company expansions creating **90 new jobs** and **\$4.85 million** capital investment



BUSINESS GROWTH

2020 — Coordinated direct COVID-19 assistance to **128** businesses



BUSINESS GROWTH

2020 — Provided direct essential resource information to Shelby County businesses: COVID-19 toolkit; social media content (#ShopShelbyCounty); job postings; and webinars



BUSINESS GROWTH

2021 — Assisted multiple company expansions retaining 268 jobs, creating **112 new jobs** and more than **\$38.8 million** capital investment



BUSINESS GROWTH

2021 — Finalized target business clusters including: Software/IT, Professional Services, Biotechnology, Automotive, Advanced Manufacturing and Logistics/Distribution



WORKFORCE

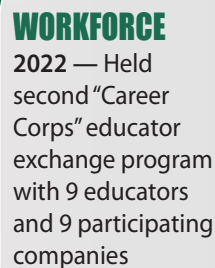
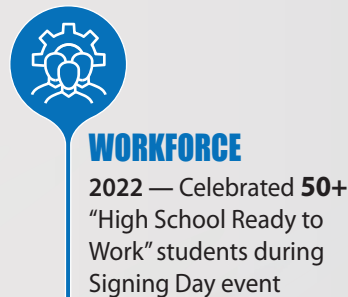
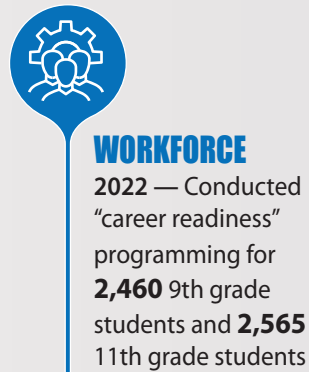
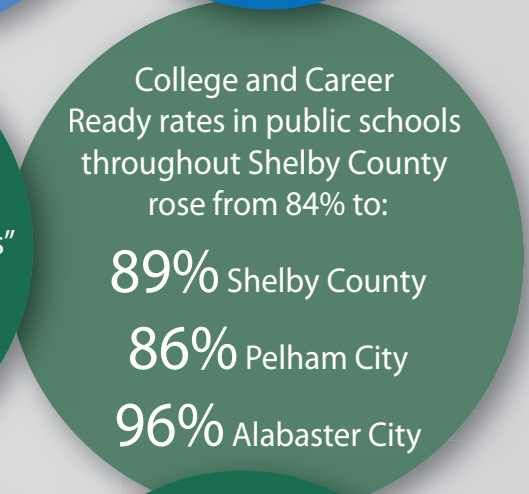
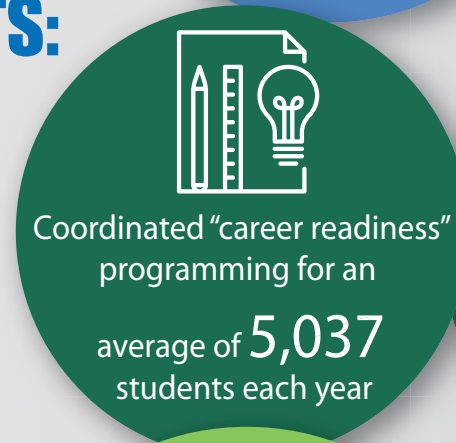
2021 — Expanded “High School Ready to Work” program with 70+ participating students and 30+ engaged companies



WORKFORCE

2021 — Launched “Career Corps” educator exchange program with 18 educators and 25 participating companies

FIVE-YEAR RESULTS:





Message from The Shelby County Chamber Board Chairs



Positive economic growth for both existing business and new-to-market additions to our business mix, all with a focus on community well-being, always requires long-term strategy combined with bold approaches and the leadership team to make it happen.

The Shelby County Chamber has a strong history of supporting business and helping improve the quality of life of the citizens of Shelby County. The pandemic tested our community resolve and staying-power and we not only survived, we pivoted to form new coalitions and alternate paths—always focused on support of our business community and building a stronger economy.

This new three-year plan ***Forward Shelby County*** is not a plan created by the Chamber

board and staff. It is a plan of all our communities in Shelby County because it is the culmination of a broad spectrum of one-on-one interviews throughout the county through which community leadership in both the private and public sectors provided individual input about the programming outreach important to all of us.

Based on the input received, the leadership of your Chamber has chosen to focus on four specific initiatives: (1) Retain and Grow Existing Business; (2) Lead Business-Driven Workforce Development; (3) Partner with 58 INC for New-To-Market Economic Development; (4) Drive Public Policy and Advocacy for a Stronger Business Climate—all with a laser focus on bringing “solutions to the table”.

Join us on this vitally important journey as we focus on ***Forward Shelby County***.

Chris Grace

A handwritten signature in black ink, appearing to read 'Chris Grace'.

2021 Chamber Chair
Barge Design Solutions, Inc.

Brian Massey

A handwritten signature in black ink, appearing to read 'Brian C. Massey'.

2022 Chamber Chair
Ascension St. Vincent's

Mechelle Wilder

A handwritten signature in black ink, appearing to read 'Mechelle Wilder'.

2023 Chamber Chair
ARC Realty

April Harry

A handwritten signature in black ink, appearing to read 'April Harry'.

2024 Chamber Chair
Warren, Averett, LLC

Initiative 1: Retain and Grow Existing Business



"The growth of existing business in Shelby County is crucial for our communities. More jobs are created from those of us already vested here. Knowing that the Chamber will continue to focus on the needs of existing business and industry here is important to our company."

—Jeff Purvis, A.C. Legg

Mission

Act as lead convener and partner in efforts to support and grow existing business and industry; research and communicate matters of economic importance to our Chamber investors and to our Shelby County communities.

Deliverables

- Increase the Chamber's Business Resource Center (one-on-one entrepreneurship assistance, Go & Grow workshops, etc.) effort by:
 - Increasing the Chamber's on-going Business Contact Program by completing a minimum of 240 visits/surveys annually over the next three years including joint visits with 58 INC fro targeted companies (minimum of 720 total visits)—*expand outreach beginning first quarter 2023*
 - Assisting a minimum of 120 business owners and entrepreneurs by providing guidance, hands on problem solving and referrals to appropriate contacts
 - Providing a minimum of 8 workshops on topics of importance to business owners and their employees
 - Launching Quarterly "hands-on" leadership, communication, teamwork management training through Sandler Training in Alabama by KSA for supervisors or managers
 - Providing a Quarterly Top Management Newsletter from Sandler Training in Alabama by KSA for leadership within your organization
- Initiate CEO one-on-one personal communications outreach plan to meet with lead investors on-site at their



location at least once a year to provide a summary of programming results and next steps and to determine any issues for which the Chamber can advocate, coordinate, or resolve—*begin first quarter 2023*

- Re-establish “Manufacturer’s Roundtable” program (suspended due to the pandemic) jointly with 58 INC to provide a platform for businesses and industry to voice their opinions on business needs to the Chamber and its public partners—*begin first quarter 2023*

- Investigate potential for other industry roundtable programs (e.g. healthcare, IT, biotech etc.) jointly with 58 INC to assist existing business leaders in assessing their specific sectors’ needs and design process to build programs to meet those needs—*design and package in 2023 and roll-out first quarter 2024*

- Assist in the creation of a minimum of 520 new jobs each year through growth of Shelby County’s existing businesses (total of 1,500+ new jobs) —*underway and ongoing*

- Increase participation in the annual “Shelby County Business Outlook” survey conducted in partnership with the University of Montevallo’s Stephens College of Business to report where Shelby County businesses think the local economy is headed for the coming year

- Produce the annual “Shelby County Business Outlook Conference” jointly with 58 INC featuring representatives from various business sectors sharing their perspectives on what the coming year will look like in their sector

- Celebrate and promote the positive economic impact and importance of small business to the County and our communities via the annual Small Business Celebration and Social Media posts

- Provide a minimum of 8 business networking events/opportunities per year for the next three years

- Support recreation, visitation and innovation by:
 - Supporting Shelby County’s tourism / recreation events initiatives
 - Expanding promotion of local culture, arts, entertainment and recreation
 - Promoting Shelby County as an innovative place to do business
 - Encouraging and celebrate the positive impact of tourism and recreation on the County’s economy
 - Promoting the impact which Shelby County’s quality of life has on the positive growth in jobs and business dollar investment for all of our communities



“As a professional child care facility owner, I observed first-hand the devastating impacts of the pandemic—particularly on small business owners struggling to survive. We are so proud that our Chamber once again was at the forefront of those who stepped up and immediately provided critical information and services to all Shelby County businesses—large and small.”

—Khiari McAlpin-Knox, Vinehouse Nursery



“Because of our company’s 35-year history in the region, we have personally experienced the twists and turns in the journey to grow and scale our business. Investment and involvement in The Shelby County Chamber provides real solutions regarding challenges to businesses like ours and credibility and visibility to reach greater success as we continue to expand our reach and marketplace.”

—Melissa Dixon, Charles Dixon Industrial



Initiative 2:

Lead Business-Driven Workforce Development



“Developing and sustaining a qualified workforce is a constant challenge for employers—especially after yet another paradigm shift caused by the global pandemic. The fact that the Chamber is working directly with the educational community at all grade levels in equipping our students to enter the workforce and now will leverage current programming by convening and collaborating with other stakeholders of like-interest and additional training partners, is absolutely on the right track.”

—Chris Wilder, SEPCO (Sealing Equipment Products Company)

Mission

Advocate, align and deliver Shelby County career-readiness programming and workforce training, in collaboration with our education leaders and various training partners, that best meet employer needs to provide an educated and trained workforce fully prepared to fulfill the workforce needs of Shelby County business and industry now and into the future.

Deliverables

- Support business and industry as a workforce resource through business-contact visits to identify solutions to employer issues.
- Recognizing the workforce paradigm shift caused by the pandemic, act as the convener to gather all stakeholders involved in preparing students to enter the workforce with the express purpose to craft a collaborative strategy to better equip student graduates with skill sets and attitudes needed to be ready to be productive in the workplace—*identify and convene stakeholders first quarter 2023; craft strategy and roll-out in time for Fall Semester 2023*
- Re-establish “Academic Leadership Council” program (suspended due to the pandemic) providing a platform for training partners (e.g. schools, Jefferson State Community College, University of Montevallo) to discuss workforce and training needs as shared by Shelby County businesses—*begin first quarter 2023*
- Research and scale best practices from other successful workforce programming already underway



throughout Alabama and tailor findings to our needs in Shelby County—*identify and contact key organizations first quarter 2023; lead a delegation from the Chamber to visit selected organizations second quarter of 2023; craft programming strategy and roll-out third quarter 2023*

- Strategically collaborate on workforce programming with training partners that lead to credential attainment or work-based learning placement (e.g. Registered Apprenticeships, Ready To Work, Alabama Industrial Development Training (AIDT) Leadership Courses)
- Lead and coordinate Job Fair programming, industry tours, etc. in collaboration with other workforce partners in Shelby County
- Determine and submit requests for grant funds available for workforce development programming
- Represent Shelby County business and industry on the State's Central Six Region Four Workforce Council and actively recruit more Shelby County business participation
- Promote and facilitate more locally hosted Central Six Region Four Workforce Council offerings for Shelby County businesses
- Pursue federal funds to support targeted opportunities for workforce training
- Continue, enhance and increase "career readiness" programming with the County's future workforce in partnership with county high schools
- Continue to grow participation in recently launched "Career Corps" program (offering educators the opportunity to learn about business needs during the Summer months to then share with students via their written lesson plans)
- Collaborate with educators and other training partners throughout Shelby County to continue career and college readiness rate increases throughout all schools in Shelby County -- as determined by the State's Department of Education career and college ready indicators. *(Benchmark Numbers: Career & College Ready rates rose from 84% over the past five years in public schools to: 89% in Shelby County Schools; 86% in Pelham City Schools; 96% in Alabaster City Schools)*
- In partnership with Express Employment Professionals, monthly leadership and employment trends/data updates will be shared and Workforce Roundtable programs will be presented



"At the University of Montevallo's Stephens College of Business, one of our key areas of focus is to truly prepare each student to "hit the ground running" when entering the workforce. Our existing partnership with the Chamber and other training partners going forward will give our students "real world" experience. Through hands-on learning, developing potential solutions to actual business problems and internships with major business and industry, we will reap huge workforce dividends presently and in the future."

—Dr. Amiee Mellon, Ph.D., Interim Dean, Stephens College of Business, University of Montevallo



"The partnership Jefferson State Community College has with the Chamber is a key component in providing skilled workers for the Shelby County workforce. Whether it be new training opportunities or enhancing current workforce initiatives, we will continue to work closely together to address the ever-evolving workforce needs of our communities."

—Keith Brown, Jefferson State Community College



Initiative 3:

Partnership with 58 INC for Economic Development



"Shelby County communities, companies and residents are benefitting from our partnership with the Chamber. Depending on the business size and need, we divide the work with the Chamber to assist existing businesses to grow and thrive. Additionally, 58 INC is continuously focused on working with municipalities recruiting new and catalytic retail development and corporations throughout the county. Our individual and joint efforts not only add to the variety and quality of companies here, but also provide the career ladders to grow and keep our skilled and hard-working labor force right here in Shelby County."

—Amy Sturdivant, 58 INC

Mission

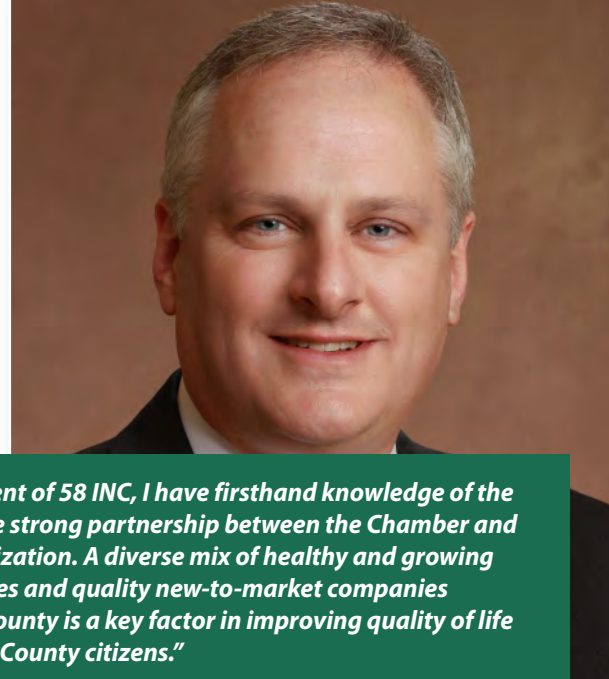
Leverage partnership with 58 INC which facilitates new capital investment and job creation resulting from recruitment of a diverse mix of business enterprises that add new higher paying jobs for Shelby County and its communities.

Deliverables

- Adopt and execute all elements contained in the 2022-2025 Partnership Agreement approved by Chamber and 58 INC boards of directors in a joint effort to maximize existing business growth and new-to-market economic development countywide—*underway and progress reviewed quarterly*
- Enhance Chamber outreach, services and contacts to all new-to-market business recruited to Shelby County to help resolve issues that pertain to workforce, infrastructure, legislative, regulatory and all other barriers within the Chamber's program of work and purview—*underway; full roll-out first quarter 2023*
- Communicate expansion and other pertinent information received through business contact visit program in a timely manner
- Share Chamber resources to facilitate 58 INC's efforts to recruit capital investment and job creation by employers and start-ups through a cluster-based recruitment and retention strategy (e.g. software/IT; professional services; biotechnology; automotive; advanced manufacturing; logistics/distribution) —*immediate and ongoing*



- Updates on 58 INC's Strategic Objectives – Chairman's Council, Strategic Partner & Cornerstone Alliance investors
- Target Sector updates from 58 INC – Chairman's Council, Strategic Partner & Cornerstone Alliance investors
- Economic Development Roundtable meetings featuring topics and speakers on key growth issues" -- Chairman's Council, Strategic Partner, Cornerstone Alliance & Investor Leader investors
- Support when necessary 58 INC's efforts to:
 - create new investment-friendly policies, real estate plans and cluster programming that support office backfill and new sites for manufacturing and distribution plants and business/industrial parks
 - partner with communities to facilitate catalytic (re)development and leasing activity through stakeholder relationships for increased sales and lodging tax revenue
 - attract retail, restaurants, lodging and entertainment establishments to key development locations throughout the County
 - recruit high-impact cluster specific incubators and accelerators
 - identify entrepreneurship incubators an accelerators

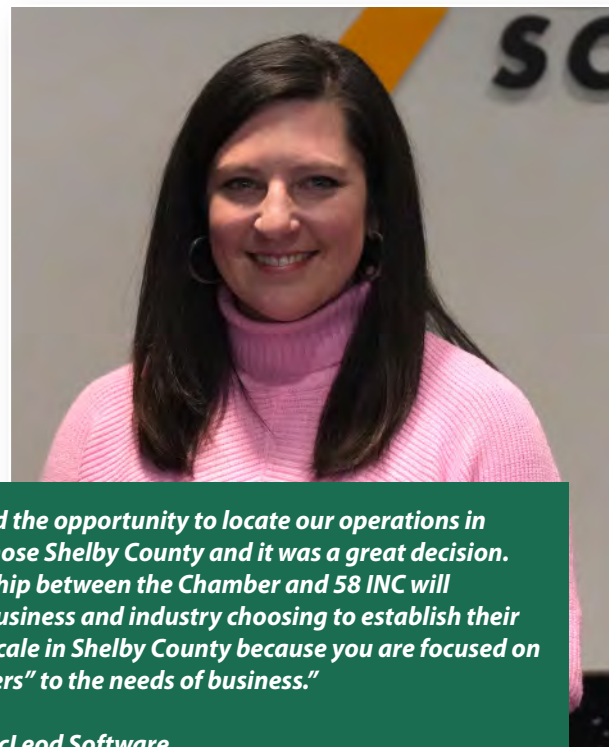


"As Board President of 58 INC, I have firsthand knowledge of the importance of the strong partnership between the Chamber and our 58 INC organization. A diverse mix of healthy and growing existing businesses and quality new-to-market companies recruited to the county is a key factor in improving quality of life for all our Shelby County citizens."

—Paul Rogers, NobleBank and Trust



Shelby County
Economic Development Corporation



"McLeod Software had the opportunity to locate our operations in many locations. We chose Shelby County and it was a great decision. The growing partnership between the Chamber and 58 INC will continue to result in business and industry choosing to establish their operation and grow/scale in Shelby County because you are focused on being "solution bringers" to the needs of business."

—Meribeth Gilbert, McLeod Software



Initiative 4:

Drive Public Policy and Advocacy for a Stronger Business Climate



"The Chamber is a vital resource for our community when it comes to public policy advocacy. As the Chamber's 2023 Vice-Chair of Governmental Affairs I pledge that we will continue identifying community challenges, advocating for solutions and educating all stakeholders in a way that helps craft better public policy and a pro-business climate."

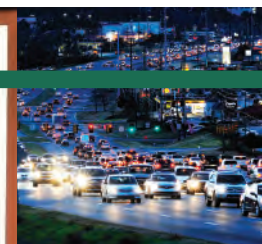
—Lee Dorrill, Blue Cross Blue Shield of Alabama

Mission

Lead the focus on proactive, strategic outreach to draw attention to and influence policy decisions locally, and at the state and federal level, that support business, economic and workforce development.

Deliverables

- Aggressively advocate pro-business legislation at all levels of government -- *in place and enhancing in 2023 forward*
- Aggressively fight against legislation at all levels of government that are harmful to business— *in place and enhancing in 2023 forward*
- Operate as the "Voice of Business" for Shelby County by engaging a full range of Shelby County businesses to capture the key issues of concern gathered from: the on-going Business Contact Program, community leadership contacts, the new Chamber CEO personal investor site visit plan and continued work of the Chamber's Governmental Affairs Work Group and programming, communicate to our elected and appointed representatives and pursue resolution of those priorities—*in place and enhance in 2023 with the additional intel of input from the sector cluster teams under Initiative number one*
- Review and update the Chamber's Public Policy Agenda capturing the key issues which business and community leaders consider the highest priorities—*in place and on-going*



- Convene interactive and engaged Governmental Affairs programming to provide Shelby County business community opportunities to engage elected officials at all levels:

- Legislative Preview program with County's state legislative delegation
- State of Our Communities program with Mayors throughout Shelby County jointly with 58 INC
- Eggs & Issues events and Washington Update programs with federal legislative delegation
- Legislative Wrap Up Reception with County's state legislative delegation jointly with 58 INC
- State of Our County Luncheon

- Convene and lead the Shelby County Mayors' Association, jointly with 58 INC, providing municipal leadership with the opportunity to meet and discuss issues of importance to their respective communities, and when appropriate share resources—*in place and on-going*

- Identify, convene and partner with organizations of like-mind on key business policy issues to build critical mass for increased ability to influence legislation—*identify, recruit and convene partners by year-end 2023*

- Lead the annual Shelby County Montgomery Drive-In event, jointly with 58 INC, to hand-carry and discuss face-to-face the Chamber's Public Policy Agenda with our elected officials

- Lead efforts to advocate for continued investment in transportation and infrastructure projects which spur positive growth and enhance the quality of life throughout Shelby County—*in place and on-going*

- Host Candidates' Forums to facilitate voter understanding of key issues and candidates' positions in dealing with resolution of a given issue—*on-going and in place for election years*



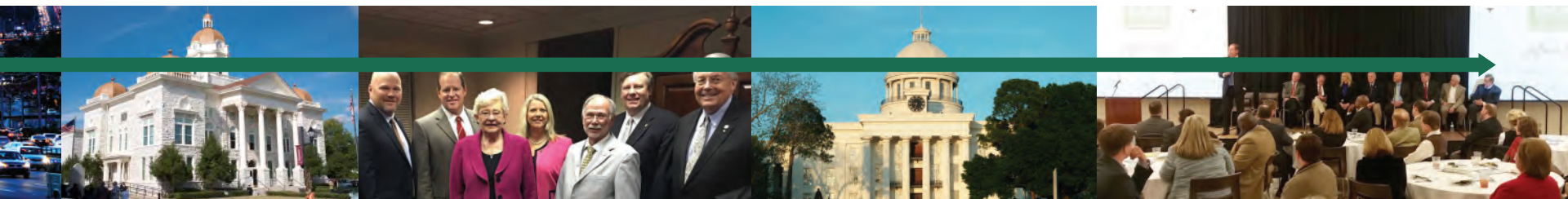
"Being actively involved in Chamber governmental affairs work gives me a seat at the table, as a representative of Alabama Power, with local elected and appointed officials and decision makers. This collective work – showing strength in numbers - allows the Chamber to impact issues locally and statewide that are important to business."

—Kimberly Jackson, Alabama Power



"The Chamber's local public affairs meetings and advocacy visits to Montgomery with a well-crafted policy issue agenda during legislative sessions provide ideal forums for legislators to actively engage on public policy issues with Shelby County business and community leaders."

—Dan Roberts, State Senator



Campaign Goal

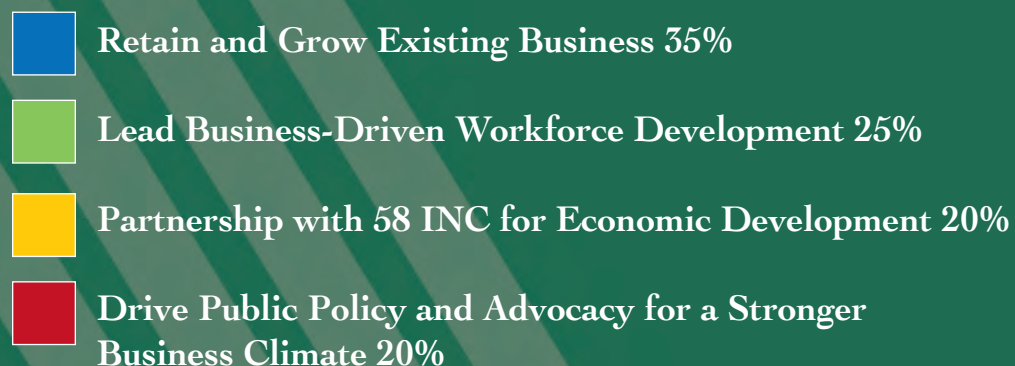
Annual Budget:

\$450,000

Three-Year Budget:

\$1,350,000

How your investment dollars are spent:



Investor Benefits

Chairman's Council -- \$20,000+ Annual Investment

- Annual Chamber membership investment included with Chairman's Council investment
- Two exclusive "Presenting Level sponsorships" of a Chamber event/program with highest selection priority and all benefits
- A reserved table of six with most prominent location for each of the following events:
 - Annual Chamber Meeting (January each year)
 - Annual Business Outlook Conference (January each year)
 - Annual Legislative Preview Luncheon (Prior to the State Legislative Session)
 - Eggs & Issues Programs (Throughout the year)
 - Annual State of the County Presentation (October each year)
- Two complimentary registrations for the annual "State of Our Communities" Luncheon featuring updates from all of our municipalities (February each year)
- Two complimentary registrations for the annual Montgomery Drive-In event (During the State Legislative session)
- Two complimentary registrations to the Legislative Wrap-Up Reception (Following the conclusion of the Legislative session)
- Two complimentary registrations for the Annual Industry Appreciation Reception (Fall each year)
- Invitation to all **Forward Shelby County** investor-only events
- 50% discount on all other event and program sponsorship purchases
- Quarterly hands-on workshops through Sandler in Alabama with Kristine Sizemore addressing your leaders' most pressing problems and developing a plan and tools they can apply right away
- Quarterly Top Management Newsletter from Sandler in Alabama by KSA for leadership team within your organization sharing best practices and tips on topics related to managing the people and processes critical to your business success
- Monthly Leadership and Employment Trends/Data updates provided by Express Employment Professionals
- Periodic in-depth White Paper reports on timely and relevant workforce topics provided by Express Employment Professionals
- Workforce Roundtable programs presented and facilitated by Express Employment Professionals (Two per year)
- Preferred opportunity to participate in all workforce enhancement opportunities (Job Fairs, etc.)
- In-person updates on 58 INC's Strategic Objectives
- In-person Target Sector Updates from 58 INC
- Economic Development Roundtable meetings featuring topics and speakers on key growth issues
- Quarterly in-person updates from Chamber's Leadership on **Forward Shelby County** programming progress
- Other tailored benefits of specific interest to be developed as part of your meetings with Chamber leadership
- Logo company name and link to your business on Chamber's website recognizing your Chairman's Council investment

Strategic Partner-- \$10,000+ Annual Investment

- Annual Chamber membership investment included with Strategic Partner investment
- One exclusive "presenting level sponsorship" of a Chamber event/program with highest selection priority and all benefits
- A reserved table of six with prominent location for each of the following events:
 - Annual Chamber Meeting (January each year)
 - Annual Business Outlook Conference (January each year)
 - Annual Legislative Preview Luncheon (Prior to the State Legislative Session)
 - Eggs & Issues Programs (Throughout the year)
 - Annual State of the County Presentation (October each year)
- One complimentary registration for the annual "State of Our Communities" Luncheon featuring updates from all of our municipalities (February each year)
- One complimentary registration for the annual Montgomery Drive-In event (During the State Legislative session)
- One complimentary registration to the Legislative Wrap-Up Reception (Following the conclusion of the Legislative session)
- One complimentary registration for the Annual Industry Appreciation Reception (Fall each year)
- Invitation to **Forward Shelby County** investor-only events
- 25% discount on all other event and program sponsorship purchases
- Quarterly hands-on workshops through Sandler in Alabama with Kristine Sizemore addressing your leaders' most pressing problems and developing a plan and tools they can apply right away on the job
- Quarterly Top Management Newsletter from Sandler in Alabama by KSA for leadership team within your organization sharing best practices and tips on topics related to managing the people and processes critical to your business success
- Monthly Leadership and Employment Trends/Data updates provided by Express Employment Professionals
- Periodic in-depth White Paper reports on timely and relevant workforce topics provided by Express Employment Professionals
- Workforce Roundtable programs presented and facilitated by Express Employment Professionals (Two per year)
- Preferred opportunity to participate in all workforce enhancement opportunities (Job Fairs, etc.)
- Updates on 58 INC's Strategic Objectives
- Target Sector Updates from 58 INC
- Economic Development Roundtable meetings featuring topics and speakers on key growth issues
- Quarterly in-person updates from Chamber's Leadership on **Forward Shelby County** programming progress
- Other tailored benefits of specific interest to you to be developed as part of your meetings with Chamber leadership
- Logo company name and link to your business on Chamber's website recognizing your Strategic Partner investment

Cornerstone Alliance - \$7,500 Annual Investment

- Annual Chamber membership investment included with Cornerstone Alliance investment
- Up to three reservations for each of the following events:
 - Annual Chamber Meeting (January each year)
 - Annual Business Outlook Conference (January each year)
 - Annual Legislative Preview Luncheon (Prior to the State Legislative Session)
 - Eggs & Issues Programs (Throughout the year)
 - Annual State of the County Presentation (October each year)
- One complimentary registration for the annual Montgomery Drive-In event (During the State Legislative session)
- One complimentary registration to the Legislative Wrap-Up Reception (Following the conclusion of the Legislative session)
- One complimentary registration for the Annual Industry Appreciation Reception (Fall each year)
- Invitation to **Forward Shelby County** investor-only events
- 20% discount on all other event and program sponsorship purchases
- Quarterly hands-on workshops through Sandler in Alabama with Kristine Sizemore addressing your leaders' most pressing problems and developing a plan and tools they can apply right away on the job
- Quarterly Top Management Newsletter from Sandler in Alabama by KSA for leadership team within your organization sharing best practices and tips on topics related to managing the people and processes critical to your business success
- Monthly Leadership and Employment Trends/Data updates provided by Express Employment Professionals
- Periodic in-depth White Paper reports on timely and relevant workforce topics provided by Express Employment Professionals
- Workforce Roundtable programs presented and facilitated by Express Employment Professionals (Two per year)
- Updates on 58 INC's Strategic Objectives
- Target Sector Updates from 58 INC
- Economic Development Roundtable meetings featuring topics and speakers on key growth issues
- Quarterly in person updates on **Forward Shelby County** programming progress
- Company Name on Chamber's website recognizing your Cornerstone Alliance investment

Investor Leader - \$5,000+ Annual Investment

- Up to two reservations for each of the following events:
 - Annual Chamber Meeting (January each year)
 - Annual Business Outlook Conference (January each year)
 - Annual Legislative Preview Luncheon (Prior to the State Legislative Session)
 - Annual State of the County Presentation (October each year)
- One complimentary registration to the Legislative Wrap-Up Reception (Following the conclusion of the Legislative session)
- One complimentary registration for the Annual Industry Appreciation Reception (Fall each year)

- Invitation to **Forward Shelby County** investor-only events
- 10% discount on all other event and program sponsorship purchases
- Quarterly hands-on workshops through Sandler in Alabama with Kristine Sizemore addressing your leaders' most pressing problems and developing a plan and tools they can apply right away on the job
- Monthly Leadership and Employment Trends/Data updates provided by Express Employment Professionals
- Workforce Roundtable programs presented and facilitated by Express Employment Professionals (Two per year)
- Economic Development Roundtable meetings featuring topics and speakers on key growth issues
- Quarterly updates on **Forward Shelby County** programming progress
- Company Name on Chamber's website recognizing your Investor Leader investment

Growth Partner - \$2,500+ Annual Investment

- One reservation for each of the following events:
 - Annual Chamber Meeting (January each year)
 - Annual Business Outlook Conference (January each year)
 - Annual State of the County Presentation (October each year)
- One complimentary registration for the Annual Industry Appreciation Reception (Fall each year)
- Invitation to **Forward Shelby County** investor-only events
- Quarterly hands-on workshops through Sandler in Alabama with Kristine Sizemore addressing your leaders' most pressing problems and developing a plan and tools they can apply right away on the job
- Monthly Leadership and Employment Trends/Data updates provided by Express Employment Professionals
- Quarterly updates on **Forward Shelby County** programming progress
- Company Name on Chamber's website recognizing your Growth Partner investment

Community Colleague -- \$1,500+ Annual Investment

- One reservation for each of the following events:
 - Annual Chamber Meeting (January each year)
 - Annual State of the County Presentation (October each year)
- One complimentary registration for the Annual Industry Appreciation Reception (Fall each year)
- Invitation to **Forward Shelby County** investor-only events
- Quarterly "hands-on" leadership, communication, teamwork management training through Sandler Training in Alabama by KSA for supervisors or managers
- Monthly Leadership and Employment Trends/Data updates provided by Express Employment Professionals
- Quarterly updates on **Forward Shelby County** programming progress
- Company Name on Chamber's website recognizing your Community Colleague investment

Community Leadership (as of 11/29/22)

Melinda Bennett
Shelby Emergency Assistance

Rux Bentley
Rux Carter Insurance

Keith Brown
Jefferson State Community College

Laura Clarke
SYNOVUS

John Collier
Progress Bank

Jay Dennis
First Bank

Gretchen DiFante
City of Pelham

Melissa Dixon
Charles Dixon Industries

Lee Dorrill
Blue Cross Blue Shield of Alabama

Alec Etheridge
Shelby County Newspapers, Inc.

Kelly Thrasher Fox
Hand Arendall, Harrison, Sale, LLC

Traci Fox
T Fox SalonSpa

Meribeth Gilbert
McLeod Software

Bruce Gouin
Express Employment Professionals

Chris Grace
Barge Design Solutions, Inc

April Harry
Warren, Averett, LLC

Matthew Hogan
ATG Distribution

Kimberly L. Jackson
Alabama Power Company

Guy Locker
SouthWest Water Company

Brian Massey
Ascension St. Vincent's

Khiari McAlpin
Vinehouse Nursery

Amiee Mellon
University of Montevallo's Stephens College of Business

Maurice Mercer
KATs Delivery

Kyle Mims
Edward Jones Investments – Kyle Mims Agency

Kevin Morris
America's First Federal Credit Union

William Norwood
PNC Bank

The Hon. Brian Puckett
City of Helena

Jeff Purvis
A. C. Legg, Inc.

Keith Richards
Taziki's Mediterranean Café

Dan Roberts
State Senator, District 16

Paul Rogers
NobleBank & Trust

Benji Sawyer
Sawyer Solutions, LLC

Chad Scroggins
Shelby County

Fred Smith
Vulcan Termite & Pest Control, Inc.

Steven Smith
Specification Rubber Products

Chris Stricklin
Dunn Companies

Amy Sturdivant
58 INC

Mike Swinson
Spire Alabama, Inc.

Teresa Vick
Regions

Chris Wilder
SEPCO

Mechelle Wilder
ARC Realty

"Our Chamber has a long-standing record of community involvement and support of our businesses county-wide. What's more, here in Shelby County we know that partnering together works. This new three-year plan developed by both the private and public sectors will be of great value as we continue our efforts to create the best possible quality of life in Shelby County. We encourage your support of this plan as we continue to move forward".

*—Chad Scroggins,
Shelby County Manager*



"Our citizens' quality of life depends in large measure on the growth and vitality of the business community in our municipalities and the County as a whole. I believe The Shelby County Chamber's new three-year program of work will assist in strengthening our businesses, our communities and our County."

*—Kevin Morris, Shelby County
Commission Chair*



The Shelby County Chamber 2022 Board of Directors and Executive Committee (as of 11/29/22)

Chair

Mr. Brian Massey
Ascension St. Vincent's

Chair-Elect

Chair-Elect
Mechelle Wilder
ARC Realty

Vice Chairs

Business Development & Support
Kelly Thrasher Fox
Hand Arendall, Harrison, Sale, LLC

Communications & Marketing
Lee Dorrill
Blue Cross Blue Shield of Alabama

Community & Career Development
Kevin Morris
America's First Federal Credit Union

Finance & Administration

April Harry
Warren, Averett, LLC

Governmental Affairs

Mike Swinson
Spire Alabama, Inc.

Investor Relations **Vacant**

Tourism & Recreation

John Collier
Progress Bank

Immediate Past

Chair

Chris Grace
Barge Design Solutions, Inc

Directors

Melinda Bennett
Shelby Emergency Assistance

Rux Bentley
Rux Carter Insurance

Keith Brown

Jefferson State Community College

Laura Clarke

SYNOVUS

Gretchen DiFante

City of Pelham

Melissa Dixon

Charles Dixon Industries

Traci Fox

T Fox SalonSpa

Meribeth Gilbert

McLeod Software

Bruce Gouin

Express Employment Professionals

Daniel Holmes

Shelby County Newspapers, Inc.

Guy Locker

SouthWest Water Company

Kimberly L. Jackson

Alabama Power Company

Khiari McAlpin

Vinehouse Nursery

Amiee Mellon

University of Montevallo's Stephens College of Business

Maurice Mercer

KATs Delivery

Kyle Mims

Edward Jones Investments – Kyle Mims Agency

Will Norwood

PNC Bank

Jeff Purvis

A. C. Legg, Inc.

Keith Richards

Taziki's Mediterranean Café

Benji Sawyer

Sawyer Solutions, LLC

Chad Scroggins

Shelby County

Steven Smith

Specification Rubber Products

Chris Stricklin

Dunn Companies

Teresa Vick

Regions Bank

The Hon. Brian Puckett

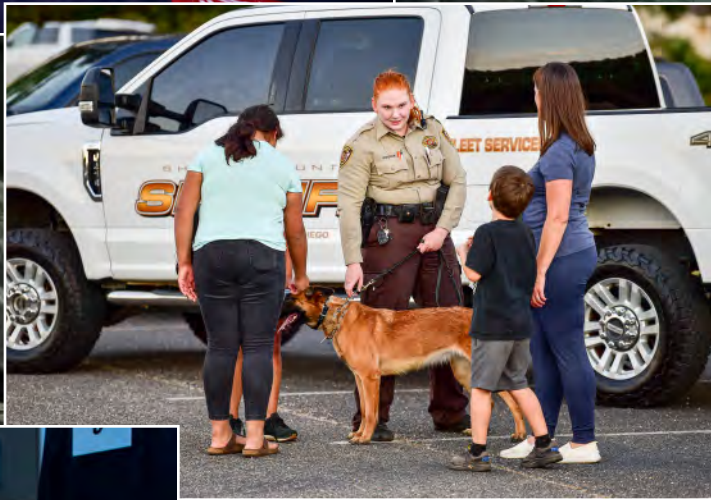
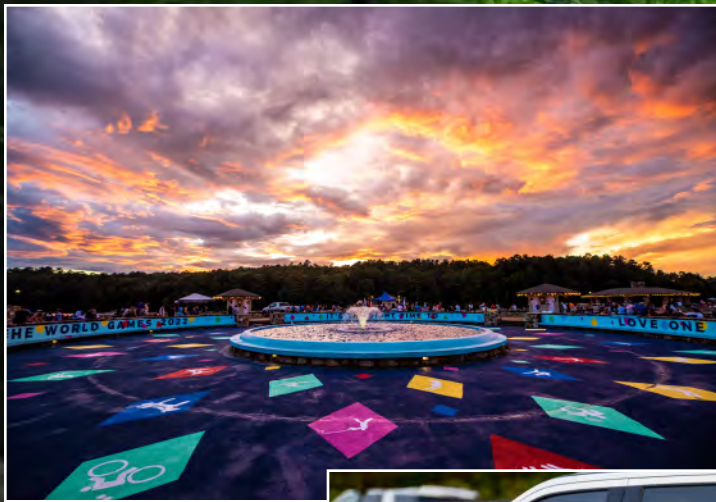
(Ex-Officio, SCMA)
City of Helena

Amy Sturdivant

(Ex-Officio)
58 INC



FORWARD
SHELBY COUNTY







THE SHELBY COUNTY
C H A M B E R

1301 County Services Drive
Pelham, Alabama 35124
www.shelbychamber.org
(205) 663-4542

Thank you to our
in-kind sponsor:

Shelby
County
Reporter
est. 1843

